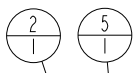
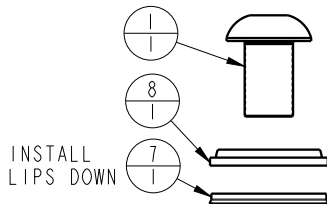
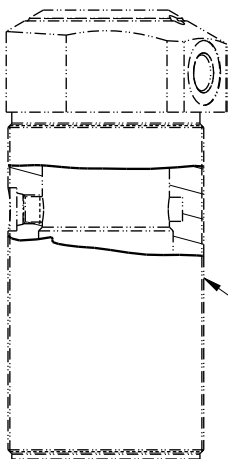


NO	QTY	PART NO	DESCRIPTION	STD SEAL KIT	FKM SEAL KIT
1	1	21500011	SCREW, CAP, BTNH, M16 X 25, ALY		
2	1	23600013	BALL STEEL, ALLOY, 312	X	X
3	1	29740200	SENSOR, ULTRASONIC, M12, 1m		
4	1	30601130	ASSY, PLUG, SOCH, SAE 3,303 SSSL		
5	1	39000038	O-RING, (-008)	X	39051021
6	1	39011056	SEAL, CROWN, 1-9/16x1-3/4x5/32	X	39V11056
7	1	39011060	SEAL, BEVEL W/HEEL INSERT, 1-1/4 x1/8 x1-1/2	X	39052015
8	1	39053005	WIPER, SNAP-IN, (1-1/4)	X	X
9	1	43000040	O-RING, DIN3869, M18		43000041
10	1	47510925	PLUNGER, SC, 5000/22 kN, US		
11	1	81400083	RETAINER, SC, HS, 5000, US		
12	1	39T55004	GASKET, (-134)	X	X
N/A	N/A	46000013	KIT, SEAL, STANDARD	INCLUDED IN KIT	
N/A	N/A	6V150218	KIT, SEAL, FKM		



4
1
TORQUE TO
50 IN-LBS
/6 Nm



BODY NOT
REPLACEABLE



11
1
TORQUE TO
30 FT-LBS/40.7 Nm



3
1
TORQUE INTO RETAINER
AT 45 FT-LB/61 Nm
BEFORE TORQUING
RETAINER INTO BODY

PARTS LIST



VEKTEK, INC.
1334 E. SIXTH AVE. P.O. BOX 625
EMPORIA, KS. 66801 U.S.A.

ASSEMBLIES AFFECTED
41502221US,
41502222US, 41402225US

PARTS LIST, ASSY, SC, TB, 22 KN, DA, RH, US

SIZE
A

MPL15003

REV
A

FORM FEG035_PL_ASIZE, REV. B

A	5660	RELEASE	ALS	3/24/25
REV	IN ACCORDANCE WITH ECN	EFFECTIVE DATE	REVISED BY	DATE
DRW BY:	ALS	DRAWING STATUS: Released		
DATE:	3/10/25	PRODUCTION APPROVED FOR RELEASED STATUS ONLY		

SHEET 1 OF 1